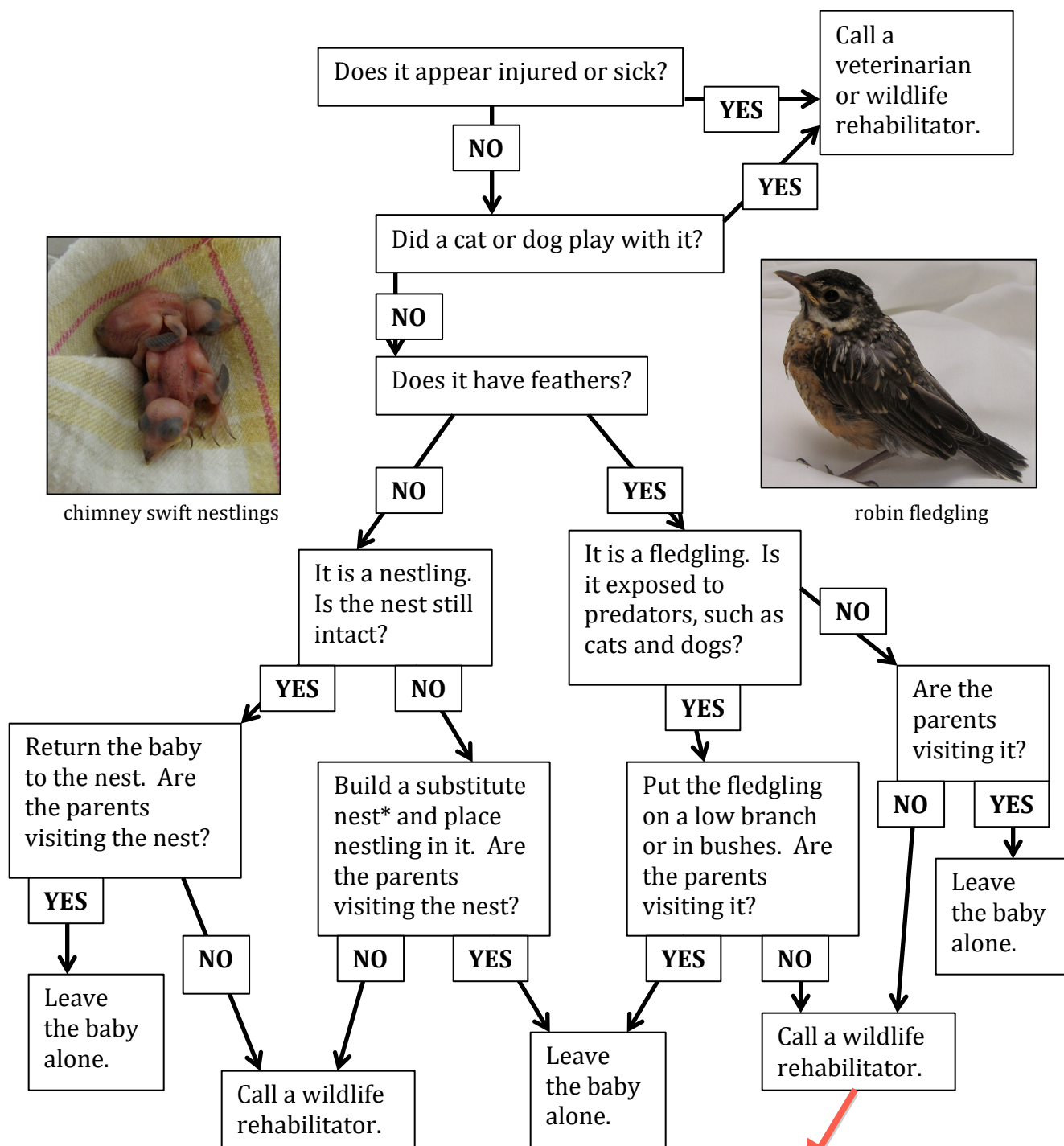


What should I do if I find a baby bird?



FIND A REHABBER: www.georgiawildlife.com/WildlifeRehabilitation

*A substitute nest can be made from a berry basket or other sturdy plastic container. Put holes in the bottom and fill with dried grass, pine needles, or the old nest. Place the nest where the old one was or, if that is inaccessible, on a branch as high as possible.

What should I do if I find a baby mammal?

